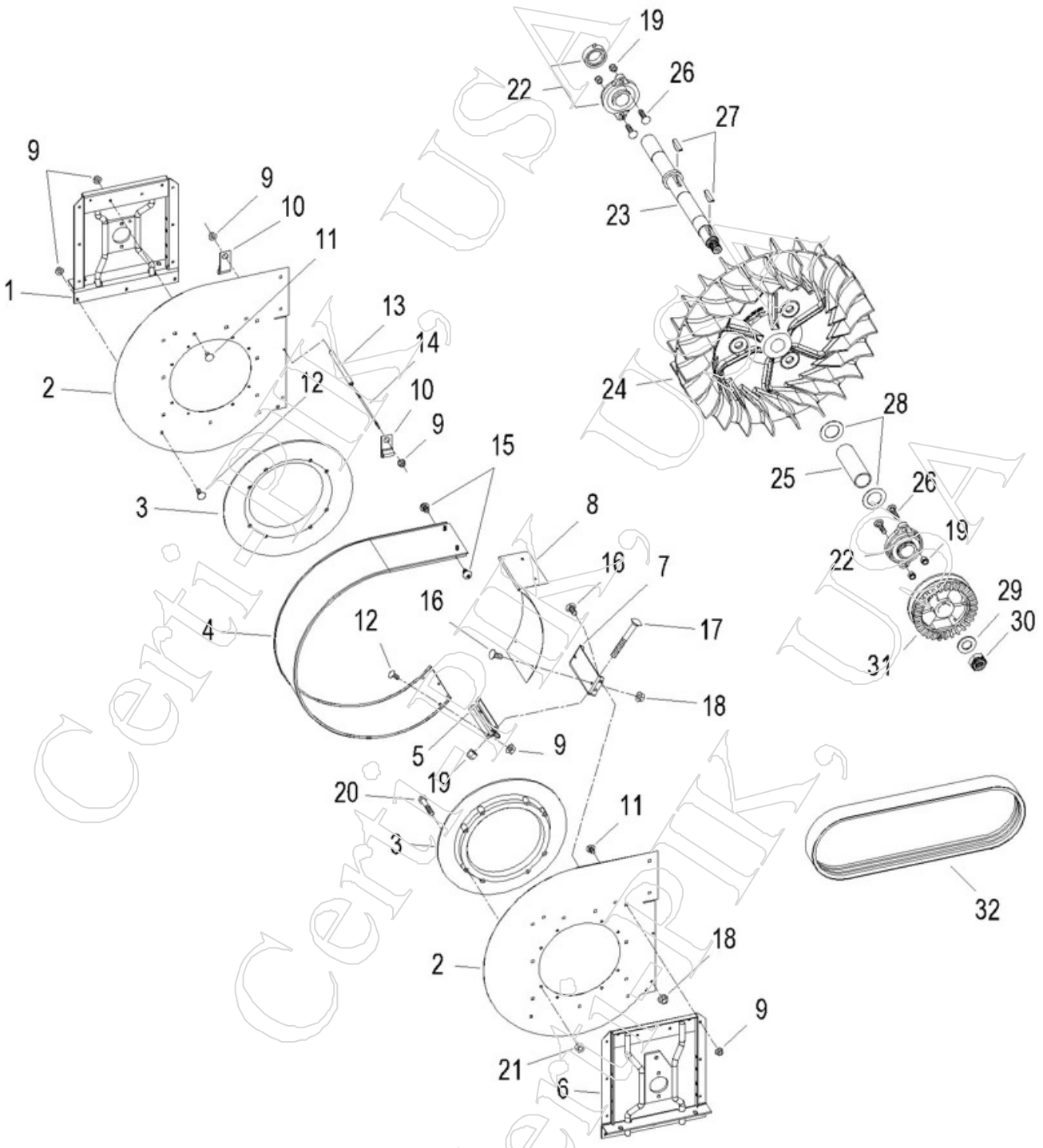


Case / IH Front Fan Assembly, 1822-2555 (S.N.499)



Case /IH Front Fan Assembly, 1822-2555 (S.N.499)

90-1

<u>Item</u>	<u>Part</u>	<u>OEMPart</u>	<u>Qty</u>	<u>Desc</u>
KIT.1	45030C1	1345030C1	1	FRONT FAN KIT - ALL PARTS UNASSEMBLED, INCLUDES # 08200 BOLT KIT, INCLUDES ITEMS #1-#31)
KIT.2	45030C1A	1345030C1	1	FRONT FAN KIT - ALL PARTS ASSEMBLED
KIT.3	08200	<----OEM	1	BOLT KIT - COMPLETE FOR FRONT CASE/IH FAN KIT, 1822-2555
1	60120C3	1260120C3	1	SIDE SUPPORT - BEARING (1/FRONT FAN, 2/REAR FAN)
2	60067C2	1260067C2	2	FAN SIDE PANEL - NEW STYLE - LARGER TRANSITION NOTCH
3	07515C1	207515C1	2	BAFFLE - PLASTIC BAFFLE OR ORIFICE
4	21533C1	221533C1	1	WRAP AROUND - HOUSING COVER
5	04414C1	204414C1	1	BRACKET - HOUSING COVER TENSION BRACKET
6	38329C1	1338329C1	1	SIDE SUPPORT - IH FRONT FAN - DRIVE SIDE (1/FRONT FAN)
7	04415C1	204415C1	1	BRACKET - UNDER SHROUD TENSION BRACKET
8	04416C1	204416C1	1	UNDER SHROUD - HOUSING COVER
9	10217P	N10217	32	NUT - 1/4 - SERR HEX FLANGE
10	62120R1P	362120R1	2	CLASP - CABLE CLIP
11	0043448P	434-48	20	BOLT - 1/4 X 1/2" CARRIAGE
12	0434412P	434-412	10	BOLT - 1/4 X 3/4" CARRIAGE
13	15020C1	215020C1	1	PIPE - HOUSING SPACER
14	15709C1	215709C1	1	STUD
15	2601346P	260-1346	2	SCREW - 8-18 X 3/8" SELF-TAP
16	01540P	434-512	6	BOLT - 5/16 X 3/4" CARRIAGE
17	01565P	433-648	2	BOLT - 3/8 X 3" CARRIAGE
18	10213P	425-105	6	NUT - 5/16 - SERR HEX FLANGE
19	11234P	425-106	6	NUT - 3/8 - NYLON LOCK
20	0413528P	413-528	16	BOLT - 5/16 X 1-3/4" HEX HEAD
21	1311215P	131-1215	16	NUT - 5/16 - CENTER LOCK
22	60257C1P	1260257C1	2	FRONT BEARING - INCLUDES HOUSING AND LOCKING COLLAR (2/FRONT FAN, 1/ REAR FAN)
23	60070C3	1260070C3	1	SHAFT - FRONT FAN
24	60010C1	1260010C1	1	FAN BLADE
25	60073C1	1260073C1	1	SHAFT SPACER
26	01480P	434-624	4	BOLT - 3/8 X 1-1/2" CARRIAGE
27	0118001P	118001	2	KEY - 5/16 X 2-1/8WOODRUFF
28	9581214P	495-81214	2	WASHER - 1-13/32 X 2-1/4 X 1/16
29	9611094P	496-11094	1	WASHER - 1.75 X .937 X .13 HDN
30	43386R1P	543386R1	1	NUT - 7/8 - NYLON LOCK
31	38322C1	1338322C1	1	PULLEY - FAN (1844-635)
32.1	B60258C2	1260258C2	NA	BELT - FAN ROTOR, MIDDLE - 1822, 1844, 2022, 2044 - (2 Band) Length 46-13/16
32.2	B38328C1	1338328C1	1	BELT - FAN ROTOR, FRONT - 1844 (S/N JJC002462 & above), 2044, 2055, 2155, 2555, CPX420, CPX420 Tier III, CPX610, CPX620, 625, 635-REAR - (3 Band)