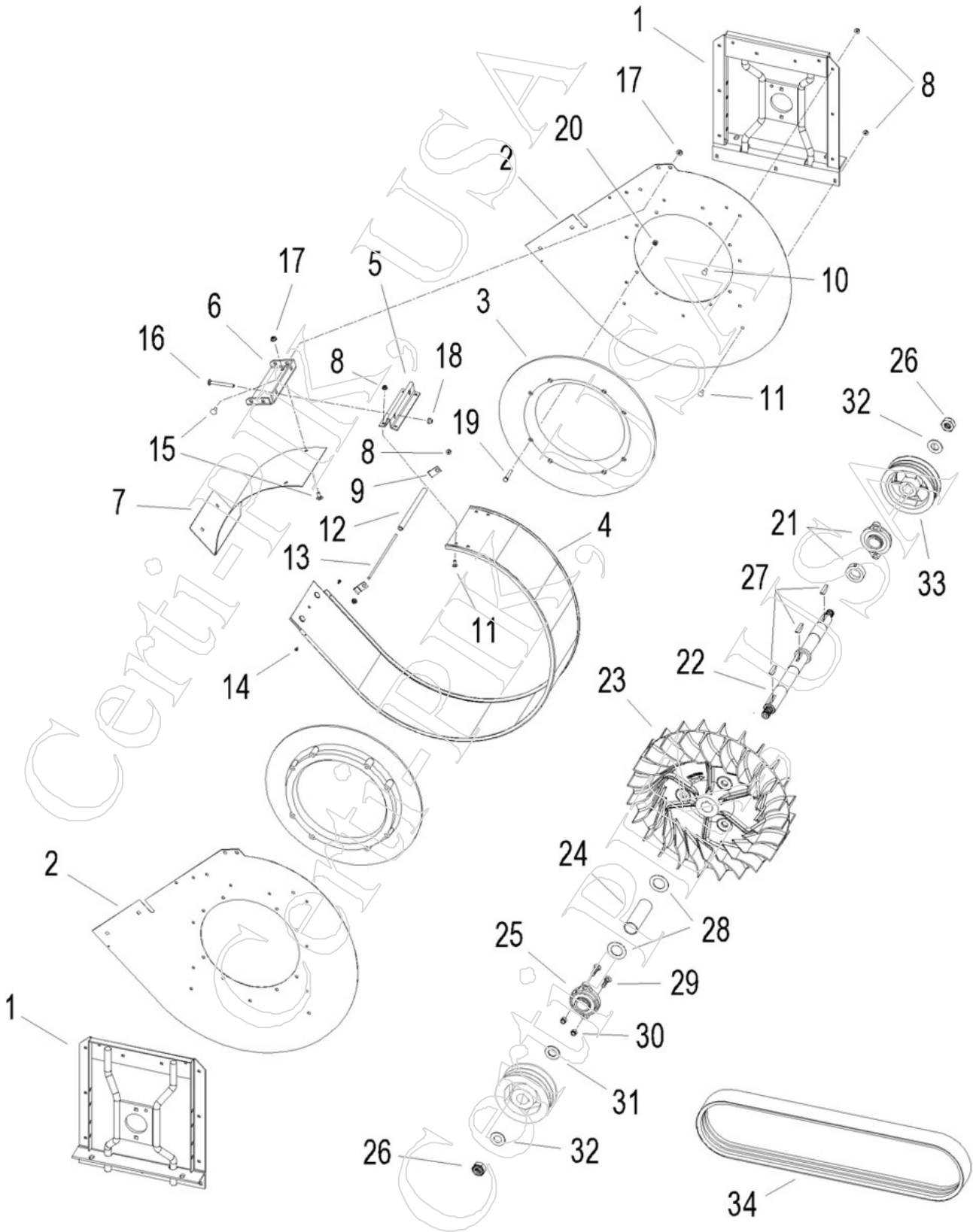


# Case / IH Rear Fan Assembly, 1822-2555 (S.N.499)



**Case /IH Rear Fan Assembly, 1822-2555 (S.N.499)**

90-2

<b>Item</b>	<b>Part</b>	<b>OEMPart</b>	<b>Qty</b>	<b>Desc</b>
KIT.1	45031C1	1345031C1	1	REAR FAN KIT - ALL PARTS UNASSEMBLED, INCLUDES # 08400 BOLT KIT, INCLUDES ITEMS #1-#33)
KIT.2	45031C1A	1345031C1	1	REAR FAN KIT - ALL PARTS ASSEMBLED
KIT.3	08400	<-----OEM	1	BOLT KIT - COMPLETE FOR REAR CASE/IH FAN KIT, 1822-2555
1	60120C3	1260120C3	1	SIDE SUPPORT - BEARING ( 1/FRONT FAN, 2/REAR FAN )
2	60066C2	1260066C2	2	FAN 45DEGREE SIDE PANEL - NEW STYLE - LARGER TRANSITION NOTCH
3	07515C1	207515C1	2	BAFFLE - PLASTIC BAFFLE OR ORIFICE
4	21533C1	221533C1	1	WRAP AROUND - HOUSING COVER
5	04414C1	204414C1	1	BRACKET - HOUSING COVER TENSION BRACKET
6	04415C1	204415C1	1	BRACKET - UNDER SHROUD TENSION BRACKET
7	04416C1	204416C1	1	UNDER SHROUD - HOUSING COVER
8	10217P	<-----OEM	32	NUT - 1/4 - SERR HEX FLANGE
9	62120R1P	362120R1	2	CLASP - CABLE CLIP
10	0043448P	434-48	20	BOLT - 1/4 X 1/2" CARRIAGE
11	0434412P	434-412	10	BOLT - 1/4 X 3/4" CARRIAGE
12	15020C1	215020C1	1	PIPE - HOUSING SPACER
13	15709C1	215709C1	1	STUD
14	2601346P	260-1346	2	SCREW - 8-18 X 3/8" SELF-TAP
15	01540P	434-512	6	BOLT - 5/16 X 3/4" CARRIAGE
16	01565P	433-648	2	BOLT - 3/8 X 3" CARRIAGE
17	10213P	425-105	6	NUT - 5/16 - SERR HEX FLANGE
18	11234P	425-106	2/6	NUT - 3/8 - NYLON LOCK
19	0413528P	413-528	16	BOLT - 5/16 X 1-3/4" HEX HEAD
20	1311215P	131-1215	16	NUT - 5/16 - CENTER LOCK
21	3058C91P	1263058C91	1	REAR BEARING, INCLUDES HOUSING AND LOCKING COLLAR
22	60072C3	1260072C3	1	SHAFT - REAR FAN
23	60010C1	1260010C1	1	FAN BLADE
24	60073C1	1260073C1	1	SHAFT SPACER
25	60257C1P	1260257C1	1	FRONT BEARING - INCLUDES HOUSING AND LOCKING COLLAR ( 2/FRONT FAN, 1/ REAR FAN )
26	43386R1P	543386R1	2	NUT - 7/8 - NYLON LOCK
27	0118001P	118001	3	KEY - 5/16 X 2-1/8WOODRUFF
28	9581214P	495-81214	2	WASHER - 1-13/32 X 2-1/4 X 1/16
29	01480P	434-624	4	BOLT - 3/8 X 1-1/2" CARRIAGE
30	11234P	21622R1	4/6	NUT - 3/8 - NYLON LOCK
31	00530P	96-11144	1	WASHER - 1.390 X 2.125 X .135"
32	9611094P	496-11094	2	WASHER - 1.75 X .937 X .13 HDN
33	38322C1	1338322C1	1	PULLEY - FAN (1844-635)
34.1	B88899C5	1288899C5	1	BELT - FAN ROTOR - 1822, 1844, 2022, 2044 - (2 Band) Length 73-55/64
34.2	B46117C1	1546117C1	NA	BELT - FAN ROTOR - 2055, 2155 - (2 Band) - 63.8"
34.3	B46117C2	1546117C2	1	BELT - FAN ROTOR - (3 Band) - 76.5" (2055, 2155, 2555, CPX420, CPX420 Tier III, CPX610, CPX620) (Prior to S/N Y6T011701)