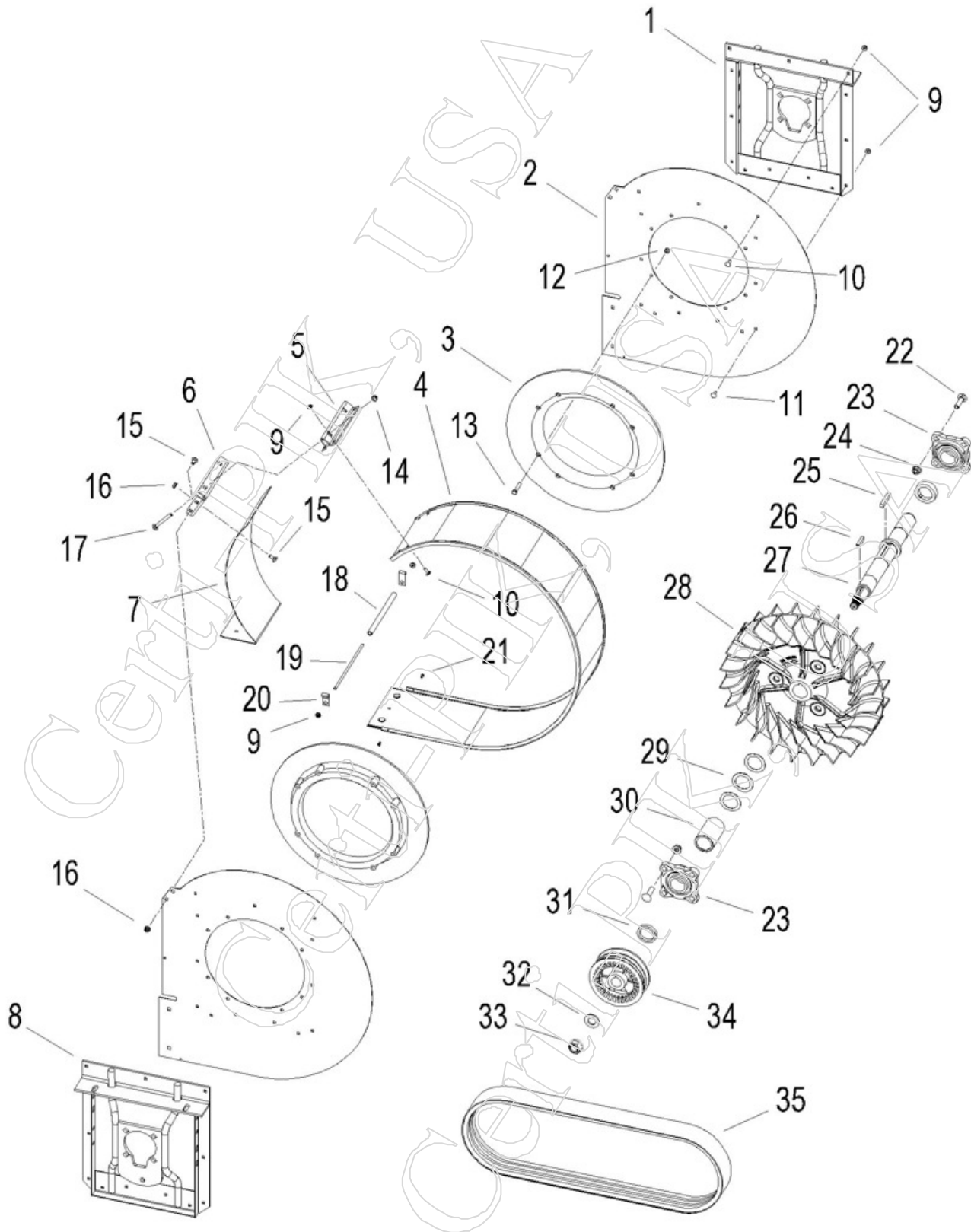


Case / IH Front Fan Assembly, 2555 (S.N. 500) - 635



Item	Part	OEMPart	Qty	Desc
KIT.1	49982A1	449982A1	1	FRONT FAN KIT - ALL PARTS UNASSEMBLED, & # 09030 BOLT KIT (INCLUDES ITEMS #1-#34), MODELS 2555-635
KIT.2	49982A1A	449982A1	1	FRONT FAN KIT - ALL PARTS ASSEMBLED, (INCLUDES ITEMS #1-#34), MODELS 2555-635
KIT.3	09030	<-----OEM	1	BOLT KIT - COMPLETE FOR CNH FRONT FAN KIT, 2555-635 (1.75 SHAFT)
1	43038A2	243038A2	1	SIDE SUPPORT 4-BOLT REAR - 1.75 DIA SHAFT - 1 ON FRONT FAN - 2 ON REAR FAN
2	60067C2	1260067C2	2	FAN SIDE PANEL - NEW STYLE - LARGER TRANSITION NOTCH
3	07515C1	207515C1	2	BAFFLE - PLASTIC BAFFLE OR ORIFICE
4	21533C1	221533C1	1	WRAP AROUND - HOUSING COVER
5	04414C1	204414C1	1	BRACKET - HOUSING COVER TENSION BRACKET
6	04415C1	204415C1	1	BRACKET - UNDER SHROUD TENSION BRACKET
7	04416C1	204416C1	1	UNDER SHROUD - HOUSING COVER
8	7403361	87403361	1	CNH SIDE SUPPORT 4-BOLT FRONT - 1.75 DIA SHAFT - 1 ON FRONT FAN - NOT ON REAR FAN
9	10217P	N10217	32	NUT - 1/4 - SERR HEX FLANGE
10	0434412P	434-412	10	BOLT - 1/4 X 3/4" CARRIAGE
11	0043448P	434-48	20	BOLT - 1/4 X 1/2" CARRIAGE
12	1311215P	131-1215	16	NUT - 5/16 - CENTER LOCK
13	0413528P	413-528	16	BOLT - 5/16 X 1-3/4" HEX HEAD
14	11234P	425-106	2	NUT - 3/8 - NYLON LOCK
15	01540P	434-512	6	BOLT - 5/16 X 3/4" CARRIAGE
16	10213P	425-105	6	NUT - 5/16 - SERR HEX FLANGE
17	01565P	433-648	2	BOLT - 3/8 X 3" CARRIAGE
18	15020C1	215020C1	1	PIPE - HOUSING SPACER
19	15709C1	215709C1	1	STUD
20	62120R1P	362120R1	2	CLASP - CABLE CLIP
21	2601346P	260-1346	2	SCREW - 8-18 X 3/8" SELF-TAP
22	0433832P	433-832	8	BOLT - 1/2-13 X 1-3/4" CARRIAGE
23	42834A2	242834A2	2	1-3/4" BEARING ASSEMBLY
24	62934P	E62934	8	NUT - 1/2 - SERR HEX FLANGE
25	57206R1P	657206R1	1	3/8 SQUARE KEY - 2-3/8 " LONG
26	0118001P	126-147	1	KEY - 5/16 X 2-1/8WOODRUFF
27	49301A2	449301A2	1	FRONT FAN SHAFT - CNH 1.75" DIA
28	43041A1	243041A1	1	FAN BLADE - 1.75" ID - NEW STYLE
29	9581092P	495-81092	3	WASHER - 2.50 X 1.78 X .06
30	43037A1	243037A1	1	SPACER - 1.75 ID CNH FAN SHAFT
31	49746A1	449746A1	1	SPACER - .38 THICK, 1.75 FAN SHAFT
32	9611094P	496-11094	1	WASHER - 1.75 X .937 X .13 HDN
33.1	0281010P	281010	1	7/8-14 GC - TOP LOCK NUT (USED IN BOLT KIT & FAN ASSY)
33.2	3246314P	232-46314	1	7/8-14 GC - FLANGED - TOP LOCK NUT
34	38322C1	1338322C1	1	PULLEY - FAN (1844-635)
35	B38328C1	1338328C1	1	BELT - FAN ROTOR, FRONT - 1844 (S/N JJC002462 & above), 2044, 2055, 2155, 2555, CPX420, CPX420 Tier III, CPX610, CPX620, 625, 635-REAR - (3 Band)