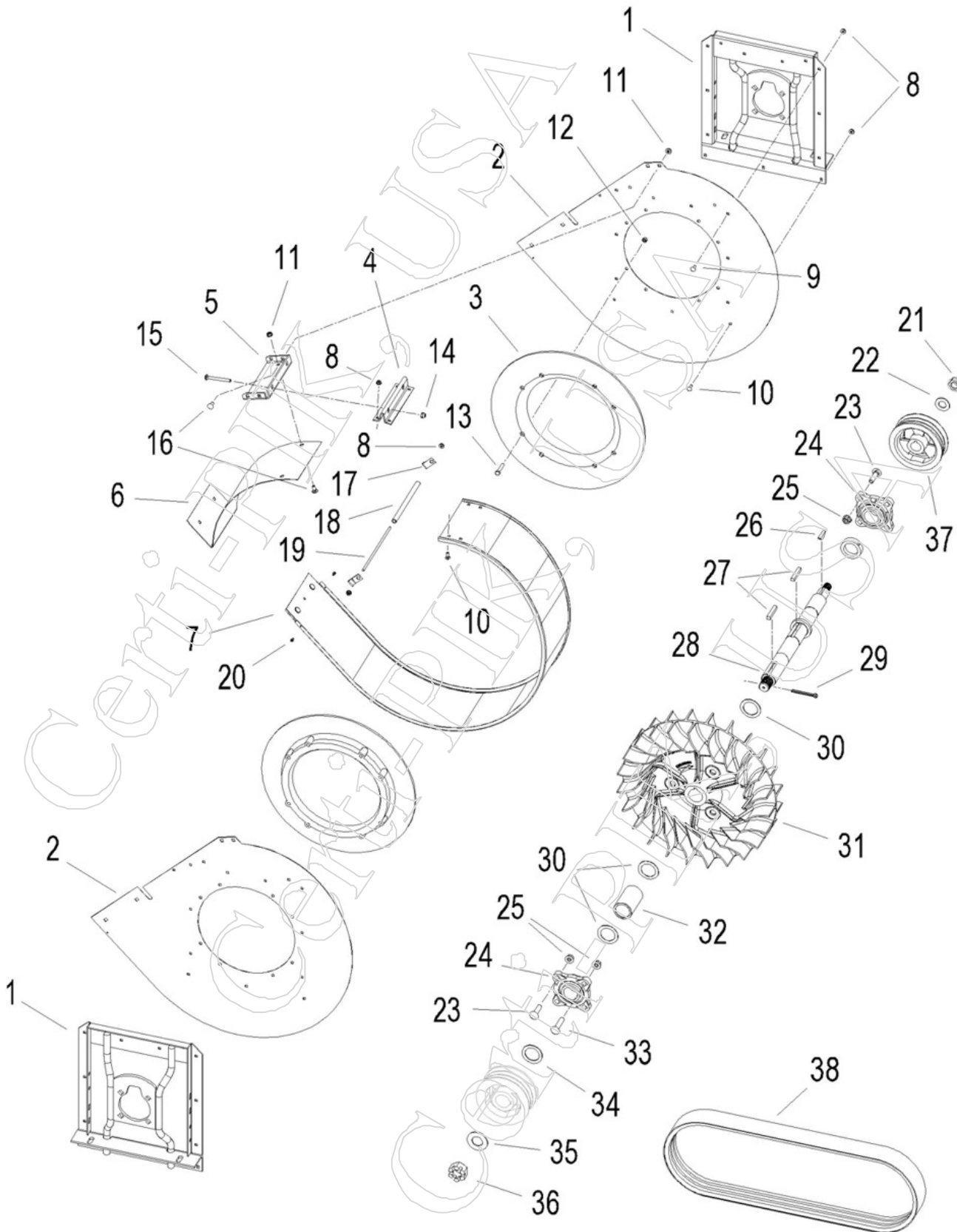


Case / IH Rear Fan Assembly, 2555 (S.N.500) - 635



Item	Part	OEMPart	Qty	Desc
KIT.1	50631A1	450631A1	1	REAR FAN KIT - ALL PARTS UNASSEMBLED, (INCLUDES ITEMS #1-#37) & #09040 BOLT KIT, MODELS 2555-635 - (DRIVE PULLEY #38 NOT IN KIT - NA)
KIT.2	50631A1A	450631A1	1	REAR FAN KIT - ALL PARTS ASSEMBLED, (INCLUDES ITEMS #1-#37), MODELS 2555-635 - (DRIVE PULLEY #38 NOT IN KIT - NA)
KIT.3	09040	<-----OEM	1	BOLT KIT - COMPLETE FOR CNH REAR FAN KIT, 2555-635 (1.75 SHAFT)
1	43038A2	243038A2	1	SIDE SUPPORT 4-BOLT REAR - 1.75 DIA SHAFT - 1 ON FRONT FAN - 2 ON REAR FAN
2	60066C2	1260066C2	2	FAN 45DEGREE SIDE PANEL - NEW STYLE - LARGER TRANSITION NOTCH
3	07515C1	207515C1	2	BAFFLE - PLASTIC BAFFLE OR ORIFICE
4	04414C1	204414C1	1	BRACKET - HOUSING COVER TENSION BRACKET
5	04415C1	204415C1	1	BRACKET - UNDER SHROUD TENSION BRACKET
6	04416C1	204416C1	1	UNDER SHROUD - HOUSING COVER
7	21533C1	221533C1	1	WRAP AROUND - HOUSING COVER
8	10217P	N10217	32	NUT - 1/4 - SERR HEX FLANGE
9	0043448P	434-48	20	BOLT - 1/4 X 1/2" CARRIAGE
10	0434412P	434-412	10	BOLT - 1/4 X 3/4" CARRIAGE
11	10213P	425-105	6	NUT - 5/16 - SERR HEX FLANGE
12	1311215P	131-1215	16	NUT - 5/16 - CENTER LOCK
13	0413528P	413-528	16	BOLT - 5/16 X 1-3/4" HEX HEAD
14	11234P	425-106	2	NUT - 3/8 - NYLON LOCK
15	01565P	433-648	2	BOLT - 3/8 X 3" CARRIAGE
16	01540P	434-512	6	BOLT - 5/16 X 3/4" CARRIAGE
17	62120R1P	362120R1	2	CLASP - CABLE CLIP
18	15020C1	215020C1	1	PIPE - HOUSING SPACER
19	15709C1	215709C1	1	STUD
20	2601346P	260-1346	2	SCREW - 8-18 X 3/8" SELF-TAP
21.1	0281010P	281010	1	7/8-14 GC - TOP LOCK NUT (USED IN BOLT KIT & FAN ASSY)
21.2	3246314P	232-46314	1	7/8-14 GC - FLANGED - TOP LOCK NUT
22	9611094P	496-11094	1	WASHER - 1.75 X .937 X .13 HDN
23	0433832P	433-832	7	BOLT - 1/2-13 X 1-3/4" CARRIAGE
24	42834A2	242834A2	2	1-3/4" BEARING ASSEMBLY
25	62934P	E62934	8	NUT - 1/2 - SERR HEX FLANGE
26	0118001P	126-147	1	KEY - 5/16 X 2-1/8 WOODRUFF
27	57206R1P	657206R1	2	3/8 SQUARE KEY - 2-3/8 " LONG
28	05117A2	405117A2	1	REAR FAN SHAFT - CNH 1.75" DIA
29	00250P	432-1636	1	COTTER PIN - 1/4 X 2-1/2"
30	9581092P	495-81092	3	WASHER - 2.50 X 1.78 X .06
31	43041A1	243041A1	1	FAN BLADE - 1.75" ID - NEW STYLE
32	43037A1	243037A1	1	SPACER - 1.75 ID CNH FAN SHAFT
33	0433840P	433-840	1	BOLT - 1/2-13 X 2-1/2" CARRIAGE
34	9581093P	495-81093	1	WASHER - 2.50 X 1.78 X .12
35	9611131P	396-11131	1	WASHER - 2.50 X 1.31 X .13 HDN
36	00927P	25-1320	1	NUT - 1-1/4-12 CASTLE
37	38322C1	1338322C1	1	PULLEY - FAN (1844-635)
38	B46117C2	1546117C2	1	BELT - FAN ROTOR - (3 Band) - 76.5" (2055, 2155, 2555, CPX420, CPX420 Tier III, CPX610, CPX620) (Prior to S/N Y6T011701)